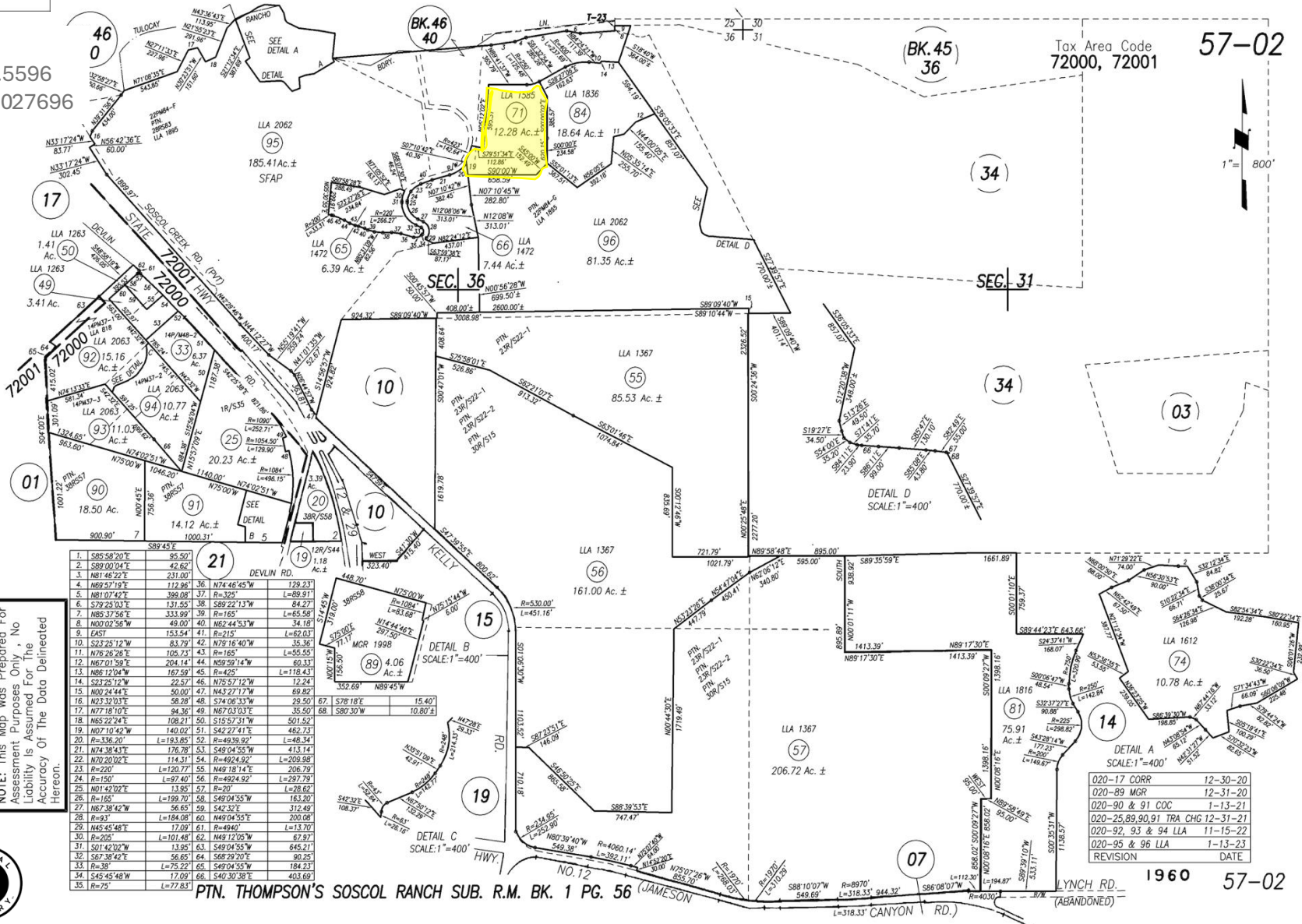


# 710 SOSCOL CREEK ROAD, NAPA, CA

ERIN LAIL  
707.333.5596  
DRE# 02027696

Tax Area Code  
72000, 72001

57-02



1. S85°58'20"E	95.50'	36. N74°46'45"W	129.23'
2. S89°00'04"E	42.62'	37. R=325'	L=89.91'
3. N81°45'22"E	231.00'	38. S89°22'13"W	84.27'
4. N69°52'19"E	112.96'	39. R=165'	L=65.58'
5. N81°07'42"E	369.08'	40. N65°44'53"W	34.18'
6. S72°23'03"E	131.55'	41. R=215'	L=62.03'
7. N85°37'56"E	335.99'	42. N79°16'40"W	35.36'
8. N00°02'56"W	49.00'	43. R=165'	L=55.55'
9. EAST	153.54'	44. N59°59'14"W	60.33'
10. S22°25'12"W	83.79'	45. R=425'	L=118.43'
11. N76°28'26"E	106.73'	46. N75°57'12"W	12.24'
12. N74°21'59"E	204.14'	47. N43°27'17"W	69.82'
13. N86°12'04"W	167.59'	48. S74°06'33"W	29.50'
14. S23°25'12"W	22.57'	49. N87°03'03"E	35.20'
15. N07°24'44"E	50.00'	50. S15°57'31"W	501.52'
16. N23°30'03"E	58.28'	51. S42°27'41"E	462.73'
17. N77°18'10"E	94.36'	52. R=493.99'	L=48.34'
18. N65°22'24"E	108.21'	53. S49°04'55"W	645.21'
19. N07°10'42"W	140.02'	54. R=492.92'	L=209.98'
20. R=336.20'	L=193.85'	55. N48°18'14"E	206.79'
21. N74°38'43"E	176.78'	56. R=492.92'	L=297.79'
22. N70°20'02"E	114.31'	57. R=207'	L=28.62'
23. R=220'	L=120.77'	58. S49°04'55"W	163.20'
24. R=150'	L=97.40'	59. S42°32'1"E	312.49'
25. N61°42'02"E	13.56'	60. N49°04'55"E	200.06'
26. R=165'	L=199.70'	61. N49°04'55"E	163.20'
27. N67°38'42"W	56.65'	62. N49°04'55"E	163.20'
28. R=93'	L=184.08'	63. S49°04'55"W	645.21'
29. N45°45'48"E	17.09'	64. S68°29'20"E	90.25'
30. R=205'	L=101.48'	65. S49°04'55"W	184.23'
31. S01°42'02"W	13.95'	66. S49°04'55"W	184.23'
32. S67°38'42"E	56.65'	67. S49°04'55"W	184.23'
33. R=38'	L=75.22'	68. S49°04'55"W	184.23'
34. S45°45'48"W	17.09'	69. S49°04'55"W	184.23'
35. R=25'	L=77.83'		

NOTE: This Map Was Prepared For Assessment Purposes Only. No Liability is Assumed For The Accuracy Of The Data Delineated Hereon.

020-17 CORR	12-30-20
020-89 MGR	12-31-20
020-90 & 91 COC	1-13-21
020-25,89,90,91 TRA CHG	12-31-21
020-92, 93 & 94 LLA	11-15-22
020-95 & 96 LLA	1-13-23
REVISION	DATE